

BOILERSPECTION™ MB MOBILE BOILER TUBE AND FURNACE INSPECTION

The Opportunity

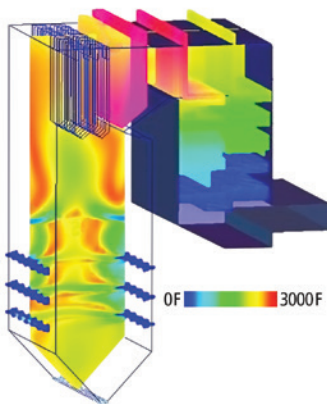
Critical asset inspection and monitoring is a necessity in coal-fired power generators and furnaces where unplanned outages can cause serious efficiency losses.

Heat exchange tubes can become deposited with fused ash or 'slag,' resulting in inefficient heat transfer, or in serious cases, large clinkers can develop that can break loose and damage other boiler components. Tubes can also develop cracks and leaks resulting in downtime or possible safety issues. Changes in fuel consumption and burner adjustments will also affect the combustion and slagging rates.

Periodic maintenance and inspection can reduce these risks and improve overall performance. With a real-time inspection tool, plant operators can quickly and accurately identify process abnormalities before they grow into problems that can lead to unplanned outages. Operators can survey the furnace to identify tube leaks, guide cleaning maneuvers, and tune the combustion process.

Our Solutions

LumaSense Technologies has taken our extensive experience with infrared thermal imagers and customer input to develop an advanced, easy-to-use mobile imaging solution for furnaces and boilers. The BoilerSpection-MB system is a comprehensive solution that includes all the components required for a user to be recording images of their critical assets.



Above: Thermal Model of a Boiler

Right: BoilerSpection MB system demonstration

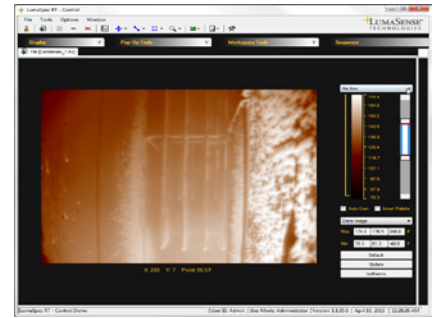




BoilerSpection MB in the included storage and travel case



Superheat pendants in 700MW power boiler burning PRB coal



Professional LumaSpec™ RT software

- **Mobile real-time monitoring** of assets with a completely integrated solution: thermal imager, monitors, radiation shield, and storage case.
- **Upgradable** with an automatic retraction system for continuous monitoring applications.
- **Quick start-up** for furnace inspection within minutes. View thermal images and record video (sequences) with LumaSpec RT software.
- **Full-service on-site training** and commissioning available.
- **Industry leading image quality.** Superior thermal imaging detector with robust, wide angle optics that can be used without cooling for most inspections.

OUR EXPERIENCE:

*Worldwide sales of over 50 units in coal boilers & furnace systems.
 Proven successful detection of fault conditions, and process improvement.
 Quick implementation with 1/2 hr from box to field use.*

Your Benefits

- ✓ Pinpoint issues before they grow into problems
- ✓ Prevent problems that result in shorter life cycles and unplanned outages
- ✓ Safely monitor at full load
- ✓ Inspect for buildup of ash fouling and proper burner operation
- ✓ Tune combustion and manage fuel switching

LumaSense Technologies

Americas and Australia
 Sales & Service
 Santa Clara, CA
 Ph: +1 800 631 0176
 Fax: +1 408 727 1677

info@lumasenseinc.com

LumaSense Technologies, Inc., reserves the right to change the information in this publication at any time.

Europe, Middle East, Africa
 Sales & Service
 Frankfurt, Germany
 Ph: +49 69 97373 0
 Fax: +49 69 97373 167

India
 Sales & Support Center
 Mumbai, India
 Ph: +91 22 67419203
 Fax: +91 22 67419201

Awakening Your 6th Sense

China
 Sales & Support Center
 Shanghai, China
 Ph: +86 133 1182 7766
 Fax: +86 21 5039 8096

www.lumasenseinc.com

©2015 LumaSense Technologies. All rights reserved.
 AppsNote-BoilerSpectionMB - Rev. 07/02/15